



Organizing Authority:

RNSYC

Montgomerykaai 1 8400 OOSTENDE

Secretariat Tel +32 (0)59/43.06.94 Harbor Master Tel +32(0)59/50.59.12 FAX +32 (0)59/51.32.70

E-mail: info@rnsyc.be www.rnsyc.be

OPEN BELGIAN CHAMPIONSHIP 470 and EUROPE REGATTA FOR FIREBALL

September 8th and 9th, 2012

ROYAL NORTH SEA YACHT CLUB
OSTEND

WITH THE KIND COLLABORATION OF



NOTICE OF RACE

1 RULES

- 1.1 The regatta will be governed by the rules as defined in *The Racing Rules of Sailing*.
- 1.2 The prescriptions of the Belgian National authority (KBVY) will apply.
- 1.3 If there is a conflict between this Notice of Race and the Sailing Instructions the Sailing Instructions shall prevail.
- 1.4 If there is a conflict between languages the English text will take precedence.

2 ADVERTISING

Boats may be required to display advertising chosen and supplied by the organizing authority.

3 ELIGIBILITY AND ENTRY

- 3.1 The regatta is open to all boats of the Europe, 470 and Fireball class.
- 3.2 Eligible boats may enter by completing the online entry form at <http://www.rnsyc.be/ostend/en/calendar.asp> and sending it in, together with the required fee, by August 30th, 2012.
- 3.3 ISAF eligibility requirements (see Rule 75) shall apply.
- 3.4 All Belgian owners must be member of the National Class Association.
- 3.5 All Belgian helmsmen and crew must be bearer of a Belgian Sailing License.



3.6 Each sailor shall be current members of their National Class Association and must have the official document require by their National Authority.

3.7 Late entries will be accepted at € 15 supplemental Entry Fee.

4 SPARE

5 FEES

The required entry fee is € 45, for Europe and € 60,- for 470 and Fireball - by bank transfer before August 30th, 2012 (raised by € 15 after that date)

Payment can be made to
Royal North Sea Yacht Club
Montgomerykaai 1
B-8400 OOSTENDE
Account NR: 380-0098478-94

IBAN: BE87 3800 0984 7894

BIC: BBRU BE BB

All charges relating to transfer of the entry fee shall be paid by the remitter

6 SPARE

7 SCHEDULE

7.1 Registration at the race office Maritiem plein (see plan attachment 1)
Friday September 7th, from 18.00 h to 21.00 h
Saturday September 8th, from 08.00 h to 09.30 h

7.2 Dates of racing:

Saturday September 8 th	11.55 h first warning
Sunday September 9 th	09.55 h first warning

7.3 Number of races:

7 races are scheduled; no more than 4 races shall be sailed on the same day.

7.4 On the last day of racing, no warning signal shall be made after 15.30 h except in case of a general recall.

8 MEASUREMENTS

Each boat shall produce a valid measurement certificate.

9 SAILING INSTRUCTIONS

The sailing instructions will be available on September 4th at <http://www.rnsyc.be/ostend/en/calendar.asp> . Hardcopies on paper will not be distributed, but one copy will be displayed at the Notice Board.

10 VENUE

10.1 Attachment 1 shows the location of the regatta harbour.

10.2 Attachment 2 shows the location of the racing areas.

11 THE COURSES

The diagrams in Attachment 3 show the courses, including the approximate angles between legs, the order in which marks are to be passed, and the side on which each mark is to be left.

12 PENALTY SYSTEM

12.1 Appendix P will apply.



13 SCORING

- 13.1 The Low Point System of Appendix A will apply.
- 13.2 3 races are required to be completed to constitute a series.
- 13.3 (a) When fewer than 4 races have been completed, a boat's series score will be the total of her race scores.
- (b) When from 4 to 7 races have been completed, a boat's series score will be the total of her race scores excluding her worst score.

14 SUPPORT BOATS

All support boats shall display at all times a flag they can obtain at registration against a deposit of € 20,-.

15 BERTHING

Competing boats and their trailers shall be kept in their assigned places in the boat park, support boats shall remain in their assigned places in the Montgomery dock.

16 RADIO COMMUNICATION

Except in an emergency, a boat shall neither make radio transmissions while racing nor receive radio communications not available to all boats. This restriction also applies to mobile telephones.

17 PRIZES

Prizegiving will be at the race office Maritiem plein (see plan attachment 1)

Prizes will be given as follows: First three boats for each class, first three female of Europe class.

18 DISCLAIMER OF LIABILITY

- 18.1 Decision to Race – The helmsman of a boat is entirely responsible for his/her own safety, whether afloat or ashore, and nothing, whether in the Notice of Race or Sailing Instructions or anywhere else reduces this responsibility.
- 18.2 It is for the helmsman of the boat to decide whether he / she is fit to sail in the conditions that he / she will find. By launching or going to sea, and or staying at sea, the boat helmsman confirm that he/she is fit for those conditions and is competent in them.
- 18.3 Nothing done by the organiser can reduce the responsibility of the helmsman of a boat nor will it make the organisers responsible for any loss, damage, death or personal injury, howsoever it may have occurred, as a result of the boat taking part in racing. The organisers encompass everyone helping to run the race and the event and include the Organising Authority, the Race Committee, the Race Officers, patrol boats and beach masters.
- 18.4 Overboard – Crews are also reminded of their primary responsibility to offer assistance to any man overboard at any time. If they stand by or assist redress can be requested.

19 INSURANCE

Each participating boat shall be insured with valid third-party liability insurance with a minimum cover of € 1.000.000 per event or the equivalent.



20 RIGHT TO USE NAME AND LIKENESS

The Media Rights belong exclusively to ROYAL NORTH SEA YACHT CLUB. By participating in this regatta a competitor automatically grants to the organising authority and its sponsors the right in perpetuity to make, use and show, from time to time at their discretion, any motion or still pictures and live, taped or filmed television and other reproductions of him or her during the period of the competition without compensation.

21 WIFI

The Royal North Sea Yacht Club offers free Wireless Internet Access in and around the Club House.

22 FURTHER INFORMATION & ACCOMODATION

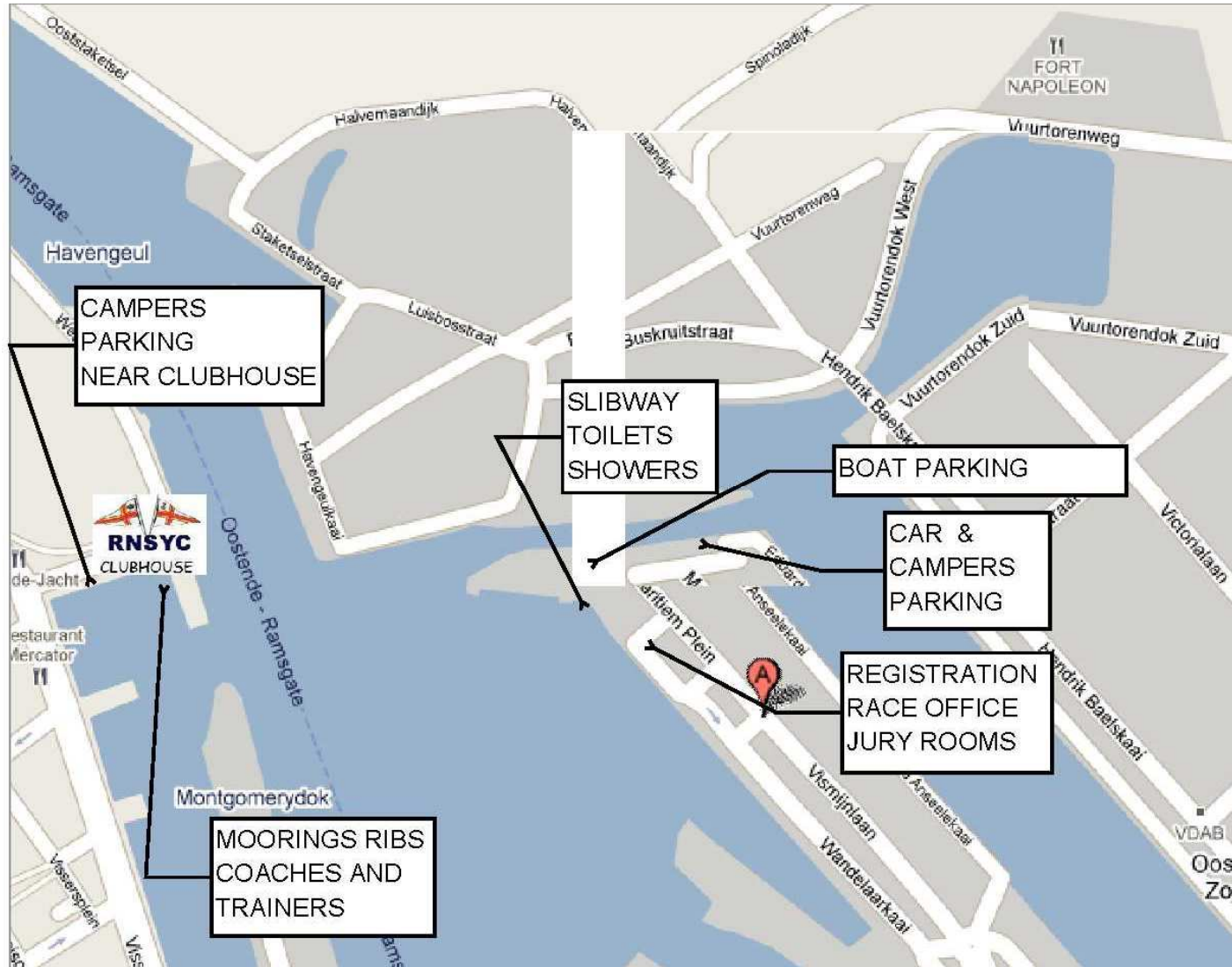
For further information please contact:

Toerisme Oostende vzw Monacoplein 1 8400 Oostende tel:+32(0)59 70 11 99 fax:+32(0)59 70 40 35 mailto:info@toerisme-oostende.be www.oostende.be	Royal North Sea Yacht Club Montgomerykaai 1 8400 Oostende tel: +32(0)59 43 06 94 fax: +32 (0)59 51 32 70 mailto:info@rnsyc.be www.rnsyc.be	Hotel du Bassin Visserskaai 1 8400 Oostende tel: +32(0)59 70 33 83 fax: +32(0)59 80 36 78 mailto:info@hoteldubassin.be www.hoteldubassin.be
Hotel Rubens Visserskaai 44 (nearest) 8400 Oostende tel: +32(0)59 80 85 08 fax: +32(0)59 50 12 26	Hotel Europe Kapucijnenstraat 52 8400 Oostende tel:+32 (0)59 70 10 12 fax: +32(0)59 50 12 26 www.europehotel.be	Hotel Bero Hofstraat 1A 8400 Oostende tel: +32(0)59 70 29 35 fax: +32(0)59 70 25 91 www.hotelbero.be

A restricted number of beds in Youthhostel “De Ploate” are available. More info: 32 (0) 59 80 52 97

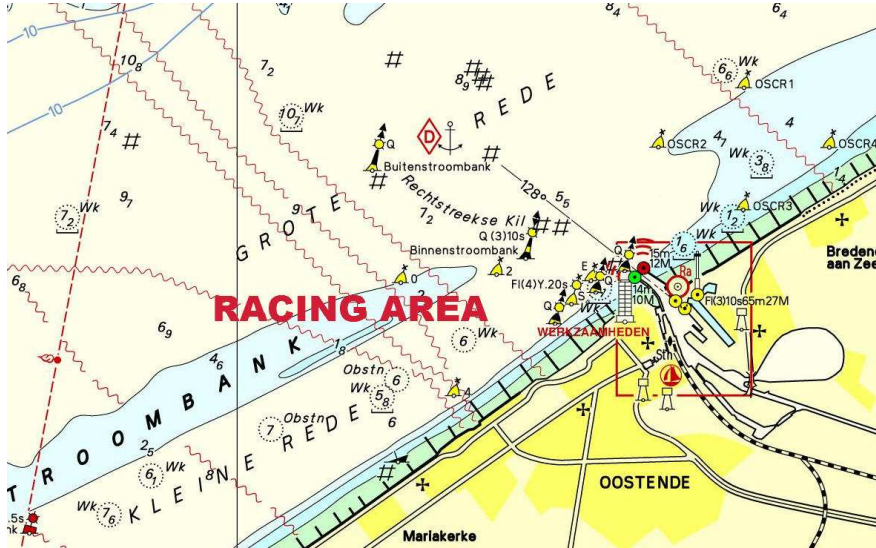


ATTACHMENT 1



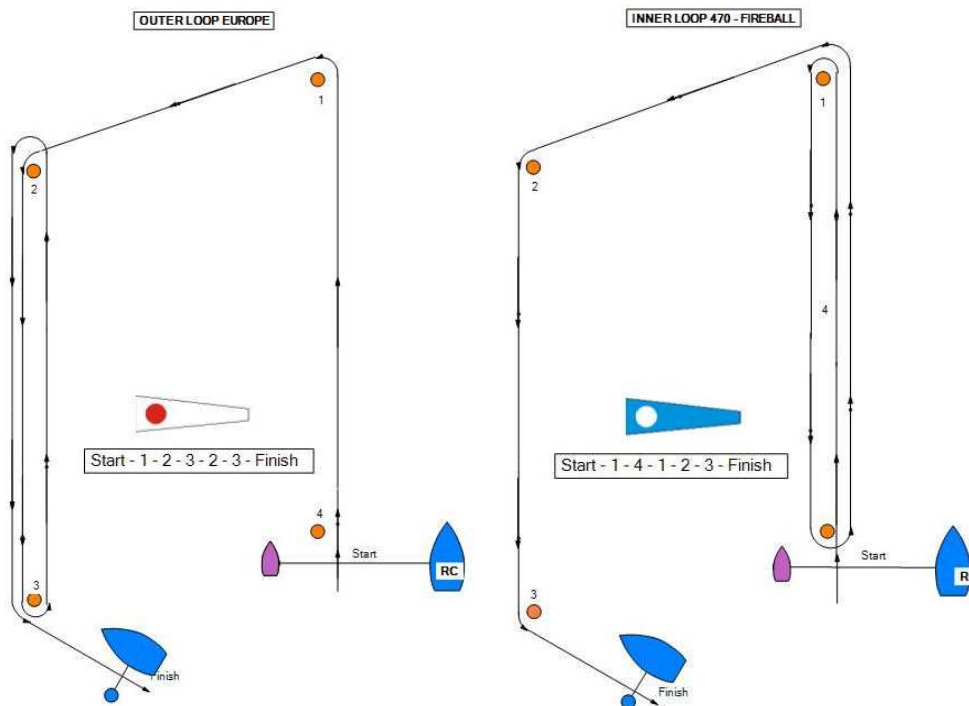


ATTACHMENT 2



ATTACHMENT 3

Courses





ADDENDUM 4

Route from Motorway E40/A10 to Race office - Maritiem plein in Ostend

DRIVING DIRECTIONS COMING FROM MOTORWAY E 40 - A 10

From: 51.18328°N, 3.11618°E A10/E40, Jabbeke, BEL
To: 51.23452°N, 2.92819°E Maritiem Plein, Ostend, BEL




Directions:


-  Leave from **A10/E40, Jabbeke**
- 1.  Bear right at A10 **Oostende** (2.5 km)
- 2.  Keep right onto R31 **Ringlaan Oostende**
- 3.  At the roundabout, take the first exit onto R31 **Ringlaan Blankenberge** (11.1 km)






4.  Turn left onto **Ankerstraat**




5.  Turn right onto **Ankerstraat**




6.  Turn left onto **Nieuwewerfkaai**


(0.0 km)

7.  Turn right onto **Vismijnlaan**

(0.1 km)

8.  At the roundabout, take the third exit onto **Vismijnlaan**

(0.2 km)

9.  Turn left onto **Maritiem Plein**

(0.5 km)

-  Arrive at **Maritiem Plein, Oostende**

(0.4 km)

